

GEODESIC DOME

EPISODE 202.2

'STRIKE WHILE THE STEEL IS HOT'



MATERIALS NEEDED

Starplate Dome Kit

56 carriage bolts for attaching wood to Starplates

2x4 spruce- the length and quantity will depend on the size of your dome

1 handle for the door

2 spring hinges for windows

2 hinges for the door

2 latches for the windows

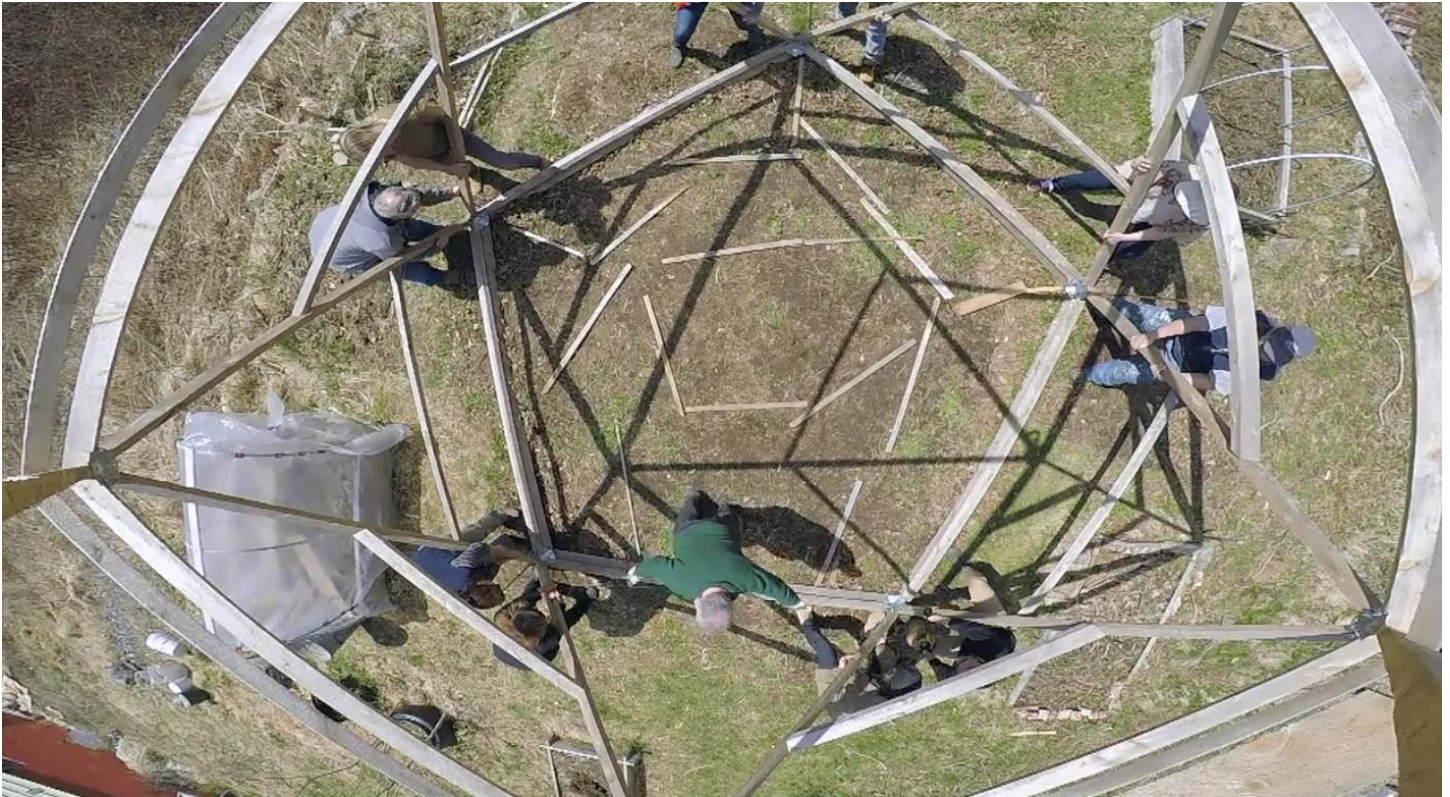
Plastic to wrap the dome

Staples to attach plastic to the dome

GEODESIC DOME

EPISODE 202.2

'STRIKE WHILE THE STEEL IS HOT'



STEP BY STEP BUILD PLAN

There are a few different ways to construct a geodesic dome. We used a Starplate Dome Kit and followed the instructions in the booklet.

Starplate connectors are steel plates with channels to hold 2x2's, 2x3's, or 2x4's. Each plate has 5 channels.

Before you start building the dome, you'll need to determine how large you want your dome to be. Once you've determined the size, clear and level the space where you will build the dome.

Once you've cleared a proper space, follow the instructions from your Starplate kit.

Once the frame has been built, you'll need to make it air tight by stapling plastic around the entire structure. Anchor the base of the dome into the ground using base strut anchoring.